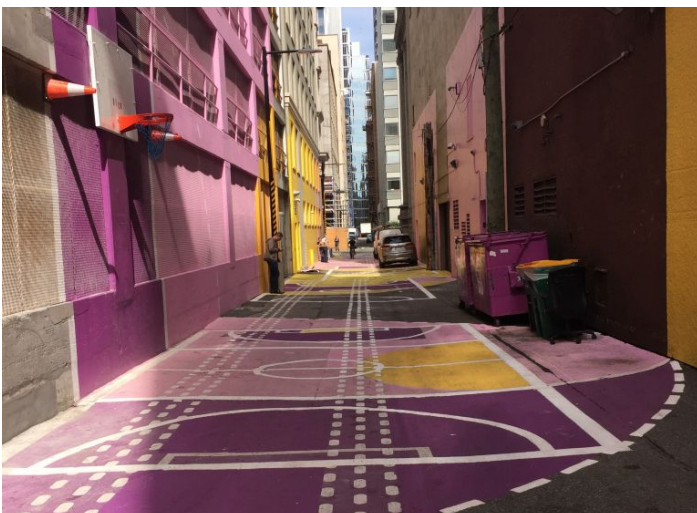


8.6 Access and Servicing

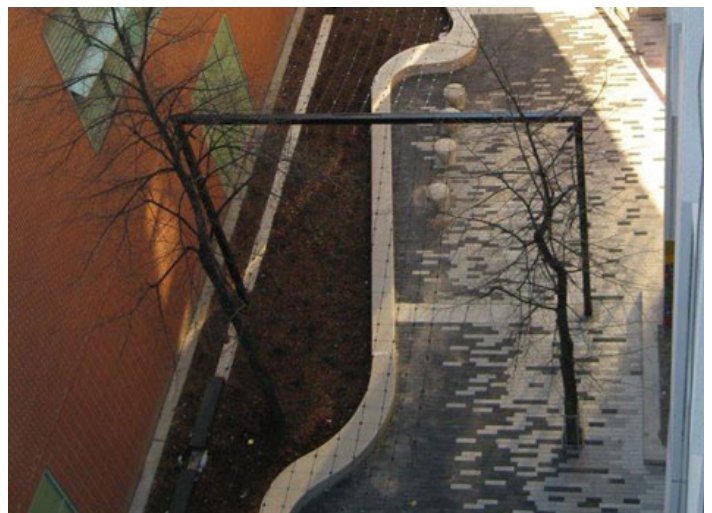
The University Districts will ensure buildings are designed to accommodate internal servicing and loading functions with organized servicing points that minimize impacts on the pedestrian realm.

General Guidelines

- Consolidate access to parking and servicing at the rear of the building to avoid interrupting the frontage. Access to parking and servicing and other vehicular related functions should not detract from the use or attractiveness of the pedestrian realm.
- Where the site backs onto a natural feature or area, integrate servicing and loading architecturally or screen from sensitive features using vegetative berms or screens to reduce impact.
- Organize site access and servicing internally and centrally to reserve space for green space.
- Below grade facilities are encouraged for higher density, larger format sites (where bedrock conditions permit). Waste bin storage rooms, in all cases, are best placed in centralized locations indoors, and at the rear of buildings fronting onto a service lane.
- Seek opportunities to activate service lanes with lighting, murals, furniture, planting, and permeable paving for when they are not in use by servicing vehicles.



Maximized Space in Alley Oop Service Lane, Vancouver Source: Aditya Chinchure, Wander Vancouver



Street Furniture and Lighting in Market Lane, London Source: Damian Holmes, World Landscape Architecture